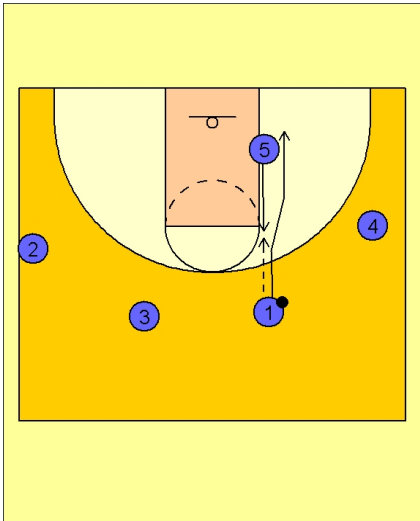




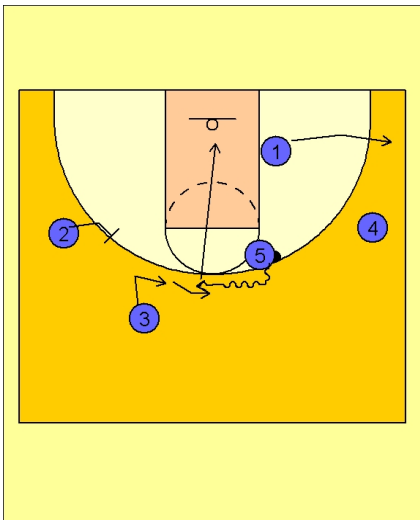
Set play (16)



Louisville Set Play

2 - 3 high set to begin.

#1 enters the ball to #5 on the right elbow area and cuts back door off the shoulder of #5.



Louisville Set Play

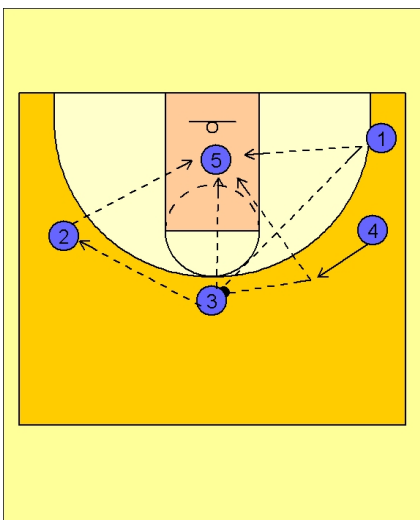
If #5 does not hand the ball off to #1, #5 will execute a dribble hand off on top with #3.

#2 and #3 are starting to set up in their normal back screen action on the wing when the ball is on the opposite top side.

This time, #3 comes back and takes the hand off on top from #5.

#1 has made his cut to the basket and then popped out to the right corner area.

#5 hands the ball off to #3 and rolls into the middle of the lane.



Louisville Set Play

#3 will now look to load up the post either directly from on top or by passing to one of the other perimeter players around #5.